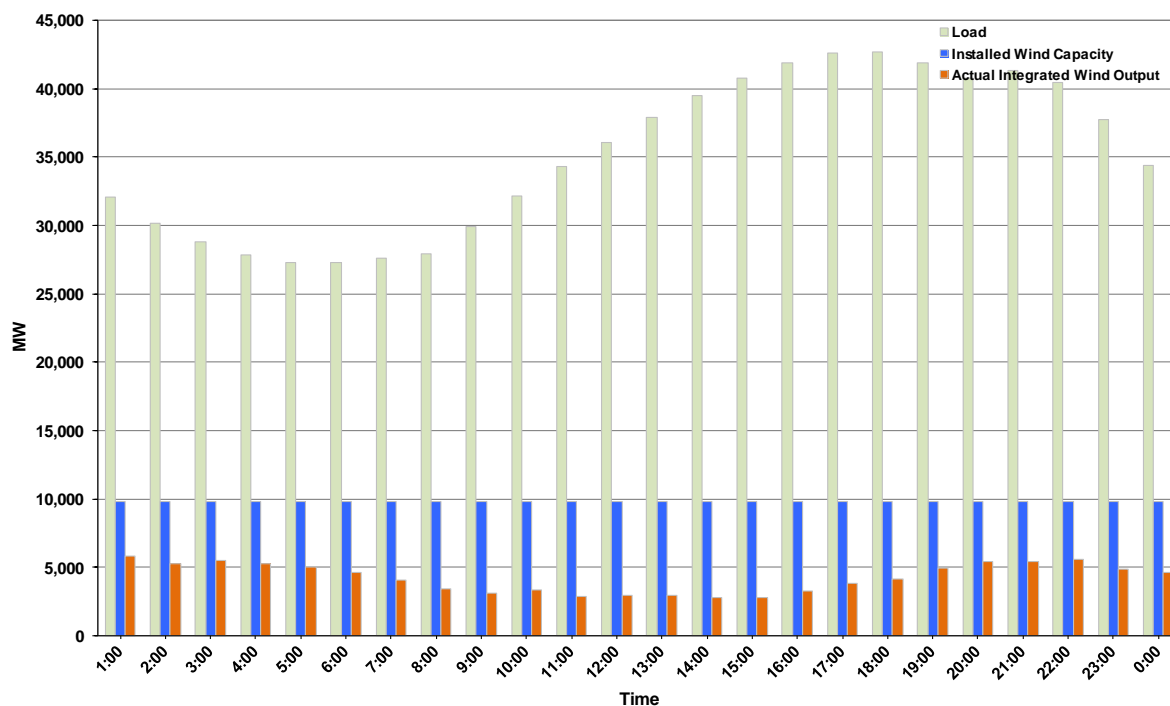




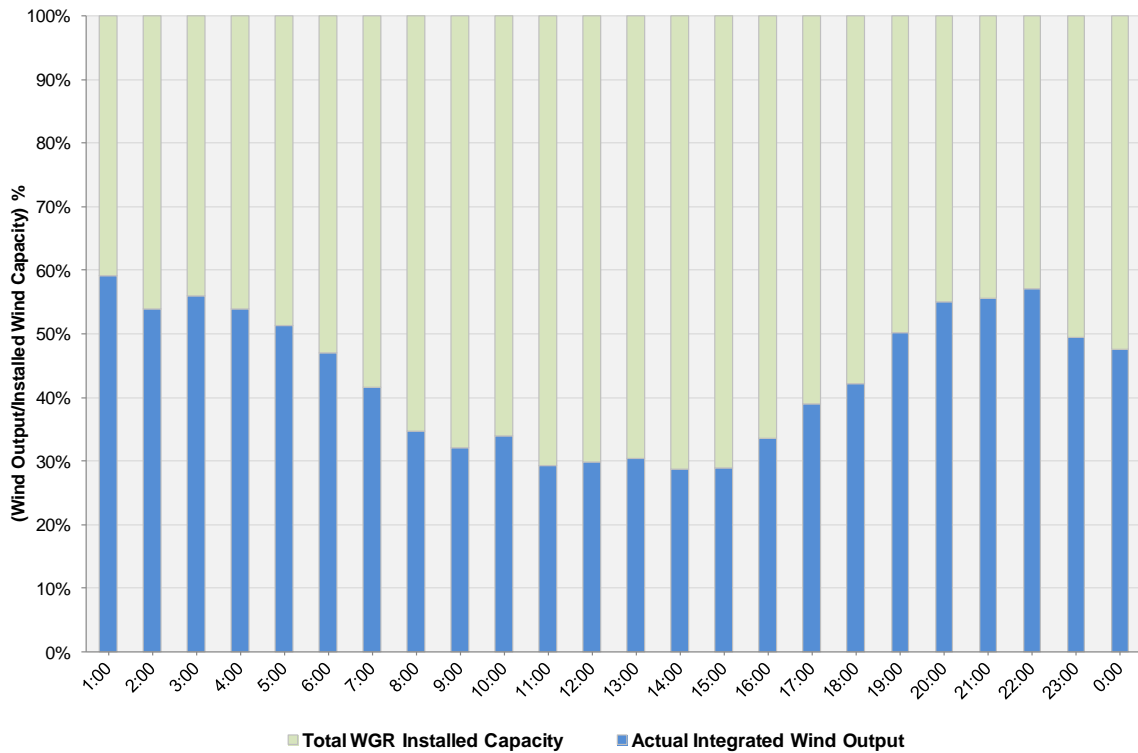
## ERCOT Grid Operations Wind Integration Report: 04/29/2012

Peak Load	<b>42,680 MW</b>
Load Peak Hour (HE)	<b>18</b>
Wind over Peak	<b>4,139 MW</b>
Wind Record 04/13/12	<b>7,925 MW</b>
Max Wind Value	<b>5,943 MW</b>
Wind Peak Time	<b>00:12</b>
Wind Integration %	<b>18.19%</b>

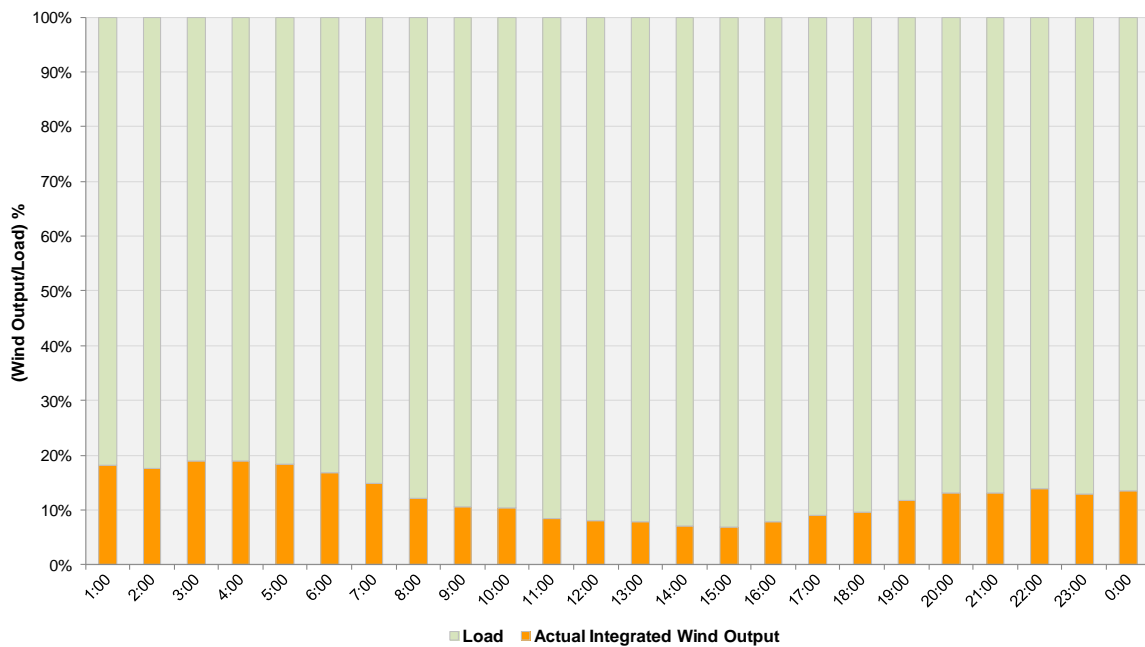
**Hourly Average Actual Load vs. Actual Wind Output  
04-29-2012**



**Actual Wind Output as a Percentage of the Total Installed Wind Capacity**  
**04-29-2012**



**Actual Wind Output as a Percentage of the ERCOT Load**  
**04-29-2012**



ERCOT Load vs. Actual Wind Output 4/22/2012 - 4/29/2012

